

MATERIAL AND FINISHING

Unique stone

Thanks to its refined aesthetic qualities and its warm, neutral colours, stone is particularly suitable both for classical and modern contexts. Thanks to its calcareous structure, Vicenza stone naturally hardens with time. It is therefore particularly suitable for large external surfaces. With their different colour gradations and original solutions, the various Vicenza stone types - Bianco Avorio, Giallo Dorato, Pietra del Mare, Grigio Argento and Grigio Alpi - enhance the overall effect of any kind of flooring, cladding and decoration, both classical and modern. Thanks to its modern machinery, Pietre can process its Vicenza stone surface in several different ways: from honing to brushing, scratching, bush-hammering, sandblasting, etc.. This impressive portfolio of textures makes it possible for Pietre to offer the best custom-designed solutions for any kind of context and environment. Pietre also offers a series of different marble varieties, thus guaranteeing a wide choice of shades and colours, for the highest customer satisfaction.

Bianco Avorio

This traditional "Vicenza Stone" par excellence is characterized by its light ivory colour. It is the result of the sedimentation of innumerable minute fossils, which create its thin and flowery texture, due to the presence of fossil algae. It is the most popular stone for classical sculptures, and it is particularly suitable for internal and external claddings, internal floors and staircases, and every other building component.



levigato *honed*



spazzolato *brushed*



sabbiato *sandblasted*



rullato *rullato*



bocciardato *bush hammered*



rigato *striated*



corteccia *corteccia*



rock finish *rock finish*

BIANCO AVORIO



Giallo Dorato

This sedimentary rock, otherwise called "Nanto Stone", is available in two varieties: light Giallo Dorato - with iso-oriented macrofossils in a golden sand matrix, and red-type Giallo Dorato - with smaller fossils in a yellow ochre matrix. Giallo Dorato is suitable both for internal and external claddings, internal floors and staircases, and every other building component.



levigato *honed*



spazzolato *brushed*



sabbiato *sandblasted*



rullato *rullato*



bocciardato *bush hammered*



rigato *striated*



corteccia *corteccia*

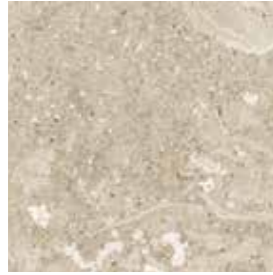


rock finish *rock finish*

GIALLO DORATO

Grigio Alpi

This light grey material, characterized by the presence of macrofossils, has recently been rediscovered by modern architecture. It is suitable both for internal and external claddings, floors and internal staircases, and every other building component.



levigato *honed*



spazzolato *brushed*



sabiato *sandblasted*



rullato *rullato*



bocciardato *bush hammered*



rigato *striated*



corteccia *corteccia*



rock finish *rock finish*

GRIGIO ALPI



Grigio Argento

This modern material is characterized by its typical grey colour. It shares the same geological origins of Giallo Dorato; the only difference being the grey colour of the calcareous background. It is suitable both for internal and external claddings, internal floors and staircases, and every other building component.



levigato *honed*



spazzolato *brushed*



sabbiato *sandblasted*



rullato *rullato*



bocciardato *bush hammered*



rigato *striated*



corteccia *corteccia*



rock finish *rock finish*

GRIGIO ARGENTO

Perla dei Berici

Compact stone characterized by soft and warm tones: a nuance in between beige and light gray. Preserved in the heart of the mountain, this sedimentary rock, whose origin can be located around 55 to 33 million years ago, includes round fossils called foramifera. Further suitable for flooring, interior staircases and cladding application.



levigato *honed*



spazzolato *brushed*



bocciardato *bush hammered*



graffiato *striated*



sabbiato *sandblasted*



rullato *rullato*



corteccia *corteccia*

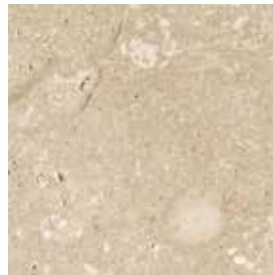


rock finish *rock finish*

PERLA DEI BERICI

Pietra del Mare

This compact bright straw-yellow stone is characterized by a sedimentary matrix which often includes small fossils. Its uniform and radiant colour makes it particularly suitable for wide external facades. It is further suitable both for internal and external claddings, internal floors and staircases, and every other building component.



levigato *honed*



spazzolato *brushed*



bocciardato *bush hammered*



rigato *striated*



sabbiato *sandblasted*



rullato *rullato*



corteccia *corteccia*



rock finish *rock finish*

PIETRA DEL MARE



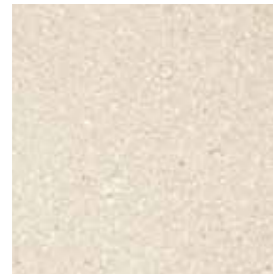
Pietranova e Alpi 4.0

PIETRANOVA is a cement agglomerate made of Vicenza stone grit, white Portland cement and water. It is a new material, produced exclusively by Pietre, and it represents the perfect marriage between the beauty of natural stone and a mix of physical and mechanical characteristics that only advanced technology can guarantee.

Designed to meet modern architectural requirements, PIETRANOVA exceeds the technical and aesthetic limits of natural materials, and it is thought for interior and exterior coatings, stairs and flooring, both for residential use and for commercial use.



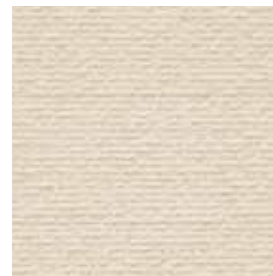
levigato *honed*



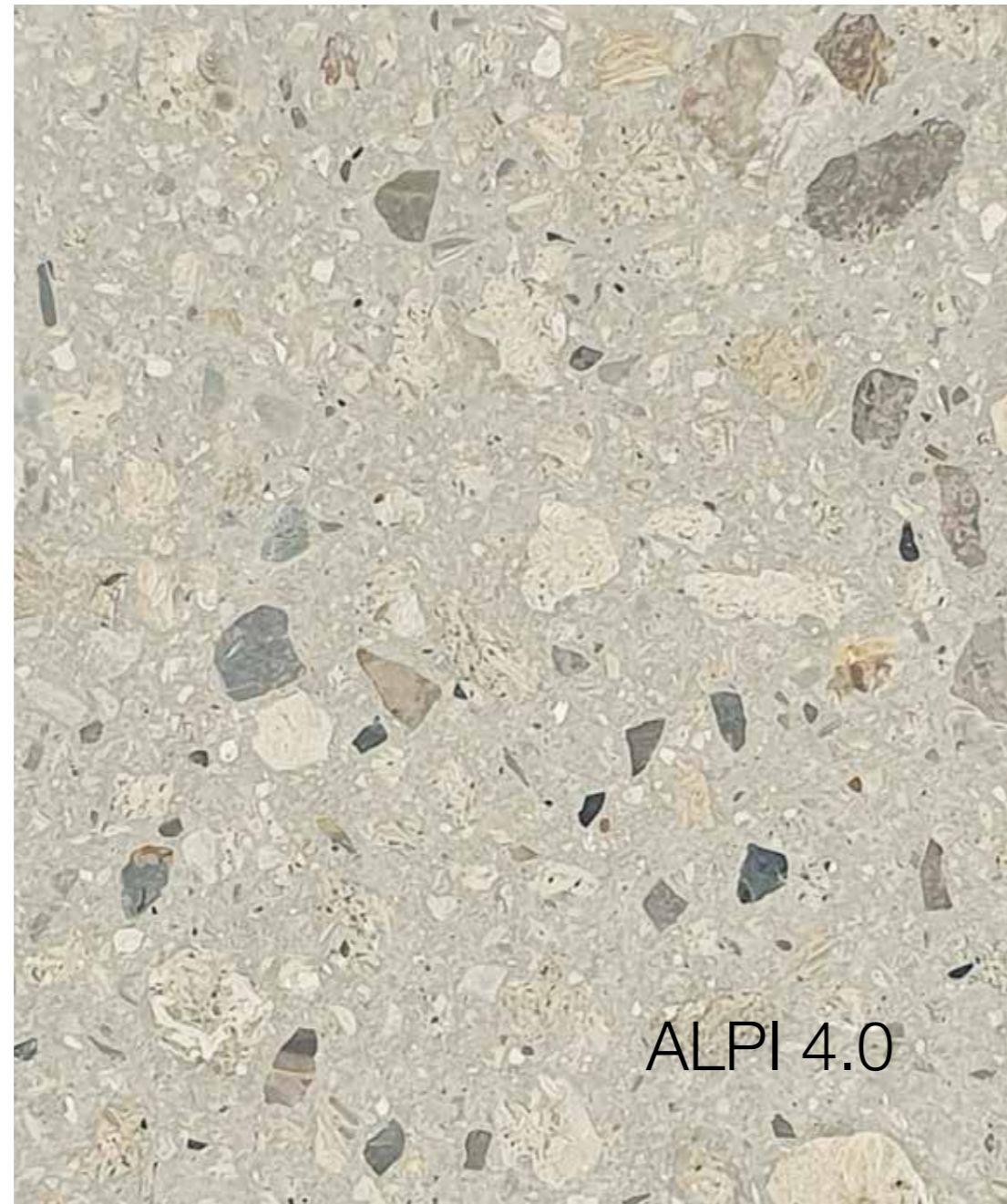
spazzolato *brushed*



bocciardato *bush hammered*



graffiato *striated*



ALPI 4.0

levigato *honed*



PIETRANOVA BIANCA



PIETRANOVA GIALLA



PIETRANOVA GRIGIA

Marbles

Beside its company-own quarry stones, Pietre offers a wide selection of fine natural marble varieties.



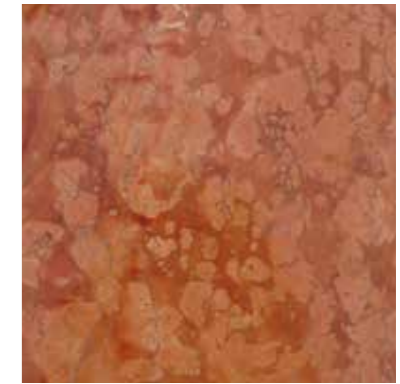
Perlino Bianco (Asiago)



Grigio Rustik



Silva Oro



Rosso Asiago



Statuario



Volakas



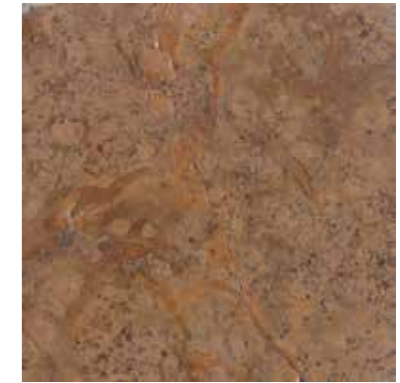
Carrara



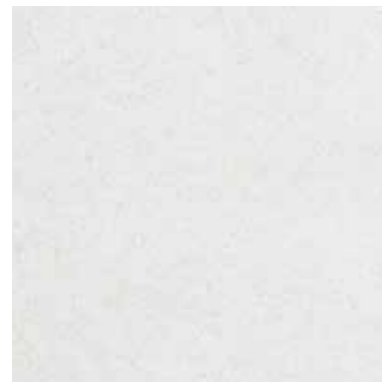
Breccia Aurora



Perlino Rosa (Asiago)



Rosso noce



Bianco Perla



Trani Apricena



Botticino



Grigio oriente



Quarzite Grigia



Nero Assoluto



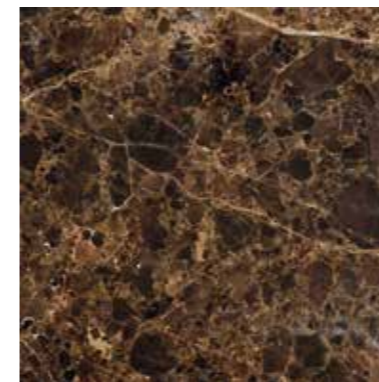
Travertino romano



Giallo d'Istria



Chiampo - Paglierino



Emperador Dark



Grigio Carnico



Nero Marquina









